

Friday 16<sup>th</sup> January 2026



## Dear Parents and Carers

We have also had several new additions to staff as well this term. Mrs Ellie Gibson Ferreira and Miss Lisa Heap have joined the nursery as our new Foundation Stage practitioners due to our expanding and popular nursery provision. Both have many years' experience of working in a nursery setting and have come from local settings. We know our youngest children will continue to flourish and thrive under our dedicated nursery staff with their warmth, expertise and passion in the Early Years.

Miss Megan Cannon is our new Early Years meal time assistant and is working with Lions every lunchtime. She is helping to serve their lunches in the hall and then supervise them in the playground. She is also covering around the school if needed.






Mrs Katie Easterbrook has joined our Out of School Club as an Out of School club assistant. She is very experienced in working in an out of school setting and in a local nursery setting. She also had children attend the school in the past so knows our routines and systems well already.

Mrs Dani Webb has also joined us from Chulmleigh College to undertake a role as a teaching assistant based in Year 2. The children know her very well already as she used to serve them their dinner as part of her meal time assistant role.

All new staff have settled in brilliantly and are fantastic additions to the team.

Just before we broke up for the Christmas holidays, Individual Education Plans (IEPs) were reviewed and updated for children that need them across the school. These plans include what additional provisions and adaptations children on the SEND register are receiving, how they are progressing and what might need to change to further support and develop the child/ren in class. These plans are very much a 'live' document for all staff to follow and annotate on and not one that are put in a folder and never see the light of day again. Likewise, your view and the child's view are vital in ensuring that the IEPs are relevant and are helping your child to progress. If you have not seen a copy of the updated IEP for your child, please speak to the class teacher in the first instance. For further questions or queries, please contact Theresa Niejadilk our SEND Lead at [tniejadilk@chulmleigh.devon.sch.uk](mailto:tniejadilk@chulmleigh.devon.sch.uk)

During the Non-Pupil Day, all staff refreshed and updated their knowledge in safeguarding, language delay and raising writing attainment as part of our school improvement priorities. Part of the day focused on early identification of Developmental Language Disorder (DLD) as this is an area we are seeing more of in school. Many children across the school struggle to understand instructions, or key aspects of learning in the classroom. There are many reasons for this. DLD was coined in 2016, and is a neurodevelopmental condition that starts in early childhood and continues. As part of the training, all staff learnt the essential skills in understanding how to support a range of children who may present with DLD and some strategies to ensure learning is made as simple for them as possible. The outcomes from the learning are below:

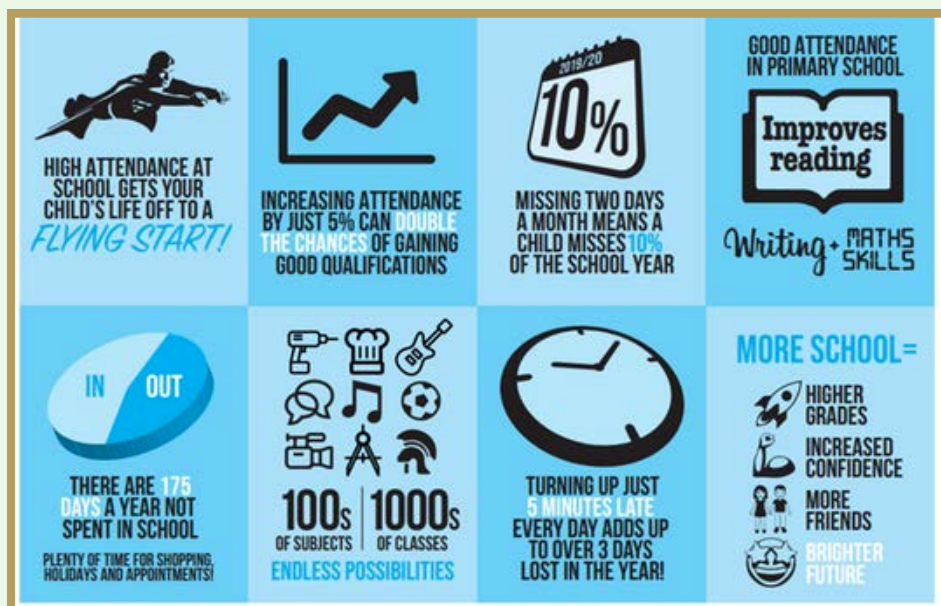
 <b>Outcome 1:</b> Understanding the disorder and focusing on the identification of a Developmental Language Disorder	 <b>Outcome 2:</b> Understanding how DLD impacts learning, social relationships and mental health of children and young people
 <b>Outcome 3:</b> Exploring how to support pupils with DLD, considering practical strategies and tips to promote the learning of children and young people	 <b>Outcome 4:</b> Identifying how to support pupils in your education setting with a whole-setting approach
 <b>Outcome 5:</b> Exploring the difficulty in identifying pupils with DLD and how their main struggle of spoken language affects other areas of the curriculum	

Staff also spent time learning how best to support all children to improve their writing and literacy skills. Staff were given lots of advice and practical guidance on raising standards in writing in Early Years, Key Stage 1 and Key Stage 2, drawing upon a range of evidence-based strategies, best practice and government guidance to motivate and support the most reluctant writer. They also learnt that building strong writers starts in Reception. Grounded in the DfE's 2025 Writing Framework, staff became upskilled in unpacking the essential building blocks – from oral composition to handwriting fluency. They were given clear, evidence-based strategies to help young children become confident, motivated writers. I know staff have already started to implement many of the ideas and guidance from their training already which will only help to improve writing standards across the school.

Excitingly, this term, we are fortunate to have volunteers come into school to teach the children bible stories as part of their Religious Education (RE) lessons. Revd Christine Chandler and her volunteers have trained in the Open the Book (OtB) storytelling initiative to bring RE lessons to life in a fun and imaginative way. Next week, Key Stage 2 children will be listening to the bible story of Jesus getting lost as a boy and learning why the bible is so important to Christians across the world. More information about Open the Book can be found at:

[https://www.biblesociety.org.uk/get-involved/open-the-book/?gad\\_source=1&gad\\_campaignid=23343412234&gbraid=OAAAAAD7k6IssCQl0JJyB60zHyf8VP6g7N&gclid=EA1aIQobChMli8rhyqcqGkgMVopSDBx1MQQE0EAAYASAAEgJ\\_NPD\\_BwE](https://www.biblesociety.org.uk/get-involved/open-the-book/?gad_source=1&gad_campaignid=23343412234&gbraid=OAAAAAD7k6IssCQl0JJyB60zHyf8VP6g7N&gclid=EA1aIQobChMli8rhyqcqGkgMVopSDBx1MQQE0EAAYASAAEgJ_NPD_BwE)

Finally, as you know, Chulmleigh Primary and the Academy Trust has an unwavering commitment to improve attendance and punctuality at school as we know what a difference it makes to every child's attainment and progress. The infographics shared by our Attendance Improvement Officer below show how important good attendance is in ensuring your child reaches their full potential. Interestingly, studies have found that good attendance during your child's primary schooling has a direct correlation to the number of GCSEs they can achieve by the time they leave secondary school. More facts about attendance can be seen in the infographic below:



Thank you all for your continued support.

With kind regards,

Martin Evely and all staff from Chulmleigh Primary School.

Monday 19 <sup>th</sup> January	Tuesday 20 <sup>th</sup> January	Wednesday 21 <sup>st</sup> January	Thursday 22 <sup>nd</sup> January	Friday 23 <sup>rd</sup> January
	Bikeability	Bikeability	Bikeability	Bikeability
	Year 3 Trip to RAMM - Exeter			
	Lunchtime Clubs KS1 Multi-skills	Lunchtime Clubs KS2 Multi- skills	Lunchtime Clubs Years 3 & 4 Mixed Football	

Monday 26 <sup>th</sup> January	Tuesday 27 <sup>th</sup> January	Wednesday 28 <sup>th</sup> January	Thursday 29 <sup>th</sup> January	Friday 30 <sup>th</sup> January
				PTA Break the rules day
Lunchtime Clubs Years 5 & 6 Boys Footballs	Lunchtime Clubs KS1 Multi-skills	Lunchtime Clubs KS2 Multi-skills	Lunchtime Clubs Years 3 & 4 Mixed Football	
After School Football Years R, 1 & 2	After School Multi-shills Years R - 6	After School KS2 Football	After School Girls Football Years R - 6	

## Cubs and Tigers

Happy New Year!

We'd like to welcome back our Nursery children and our new friends that have just joined us.

We've had so much fun creating amazing buildings, making pretend snow, playing with ice and enjoying the snowy weather! We are creating an ice palace for science and enjoying listening to 'Let it Go' from Frozen while we work hard in Write Dance!

The children were very happy to see their friends again and we've spent time chatting about what we all did over the Christmas holidays!



## Reception

What a busy first week back! We went on our first visit to the college library. The children loved listening to the stories and choosing their own books. We also started our 'Starry Night' topic, looking at the differences between night and day. We are looking forward to visit to Exmoor Zoo next week where we will learn about Nocturnal animals.

During our 'Community Walk' this week we visited Chulmleigh Church. The children learnt about the different things you might find in a Church and enjoyed asking Rev. Christine Chandler lots of questions. As always, the Lions were a credit to the community.



## Hedgehogs

It has been another great start back for the Hedgehogs, and we have been super busy doing lots of learning!

In Phonics, we are continuing to learn alternative spellings/ pronunciations for different digraphs. We have started to learn more alternative ways for the 'ee' sound, as well as 'igh'. They are amazing at using new sounds when trying to write words independently.

In English, we are focusing on the book "Could a penguin ride a bike?". The children have already listened to the story and come up with their own silly questions about what a penguin may be able to do. We have also moved on to thinking about what other silly questions we can come up with for other animals. The children have been amazing at using question marks at the end of their own questions.

In maths, our first unit back is all about place value to 20. We have been doing lots of practical activities to further develop our understanding of the numbers between 10-20. The children have been using many different manipulatives to make these numbers, and spot patterns. We have touched on how we can partition numbers in to tens and ones.

In our science this half term, we will be finishing off our senses topic and then moving onto materials.

Our topic for this half-term is Geography- Bright lights, Big city. We have already learnt the differences between urban and rural areas and what we may see in each different location. We also been learning about some of the key landmarks around London.

In art, we will be exploring sculptures. We have started by manipulating paper to see how we can make a small, 3D sculpture.

Our RE topic for this half-term is about Jewish people and how they live. The children have made their own mezuzah and written their own message on a scroll to put inside.

We are looking forward to what's to come over the next few weeks!

## Dragonflies

The children have settled back into their learning extremely well. In Geography and Science, we have begun our new topics linked to the weather and habitats around the world. The children will be learning about different climates, environments, and how living things adapt to their environment.

In English, we have been working together to write a class version of the story we are using as a focus text. The children have contributed fantastic ideas and are developing their writing skills through shared storytelling.

We are also looking ahead to some exciting opportunities beyond the classroom. We are hoping to take part in 3 trips in the coming months, with planned visits to Westward Ho, Rosemoor and Tiverton Castle. These visits will support and enrich our learning, and we will share more information as soon as dates are confirmed.

In art we are discovering the work of artist Brianna McCarthy, who grew up in the Caribbean. She focuses on making collages of faces, using multi media approach of papers, fabrics and paint. We shall eventually be making our own self portrait in this style!

Thank you, as always, for your continued support.

## Dragonflies



## Barn Owls

Happy New Year! In Barn Owls, we have started our new topic – our main focus is the question “How did the Romans change Britain?” – we have started by looking at the Roman Empire and how this grew.

In science, we are learning about forces and magnets – you may have seen our Facebook pictures of us throwing and catching balls, kicking balls and playing tug of war with our shoes on and then with our shoes off to see what happens when there is more and less friction!

In English we are learning all about fairy tales. 2026 is the Year of Reading and we have started this by creating a board in our classroom where we can all write our recommendations for others. We have discussed all of the things that we read everyday which surprised us all.

In maths, we are continuing with multiplication and division, specifically focusing on the 2,4 and 8 times tables and looking at the patterns.

Thank you, as always, for all of your support at home with Spelling Frame, TTRockstars and reading.



## Bumblebees

Bumblebees have had a good start to the new term.

We are enjoying learning about the Ancient Greeks and were impressed at the size of the Empire of Alexander the Great.

Our English book is Myth Atlas and are enjoying hearing various myths from around the world. In maths we have been learning about factor pairs and multiplying by 10 and 100. We are learning about Sculpture in art and are really excited to see the sculpture exhibition at Rosemoor Gardens on our trip.

We had our first session of gymnastics in the sports hall and enjoyed having lots of space to move.

## Squirrels

We have had a fantastic start to the term. It has been a real pleasure to come back and see how enthusiastic they have been.

They have all made an amazing start to their swimming lessons and it was a pleasure to take them.

We have started a unit on poetry in English and have looked at figurative language. We will use this language to write our own poems based on an animal of our choice. In maths, we have finished fractions and are now starting to think about multiplication of larger numbers. We have enjoyed two lessons on Earth and Space and acted out both the geocentric and heliocentric models of the solar system.

In PSHE, we have been thinking about being responsible in our actions around school. In art, we have used some tertiary colours and learnt about the colour wheel. We have started to talk about biomes and will learn more about these in geography. Thanks, as ever, for all your support.



## Otters

Year 6 have settled back into school after the Christmas break brilliantly. They are adjusting to the new set up of Mrs Healey teaching English and myself teaching maths – it is giving them a taste of what college life will be like moving between classes and they have adapted to this brilliantly.

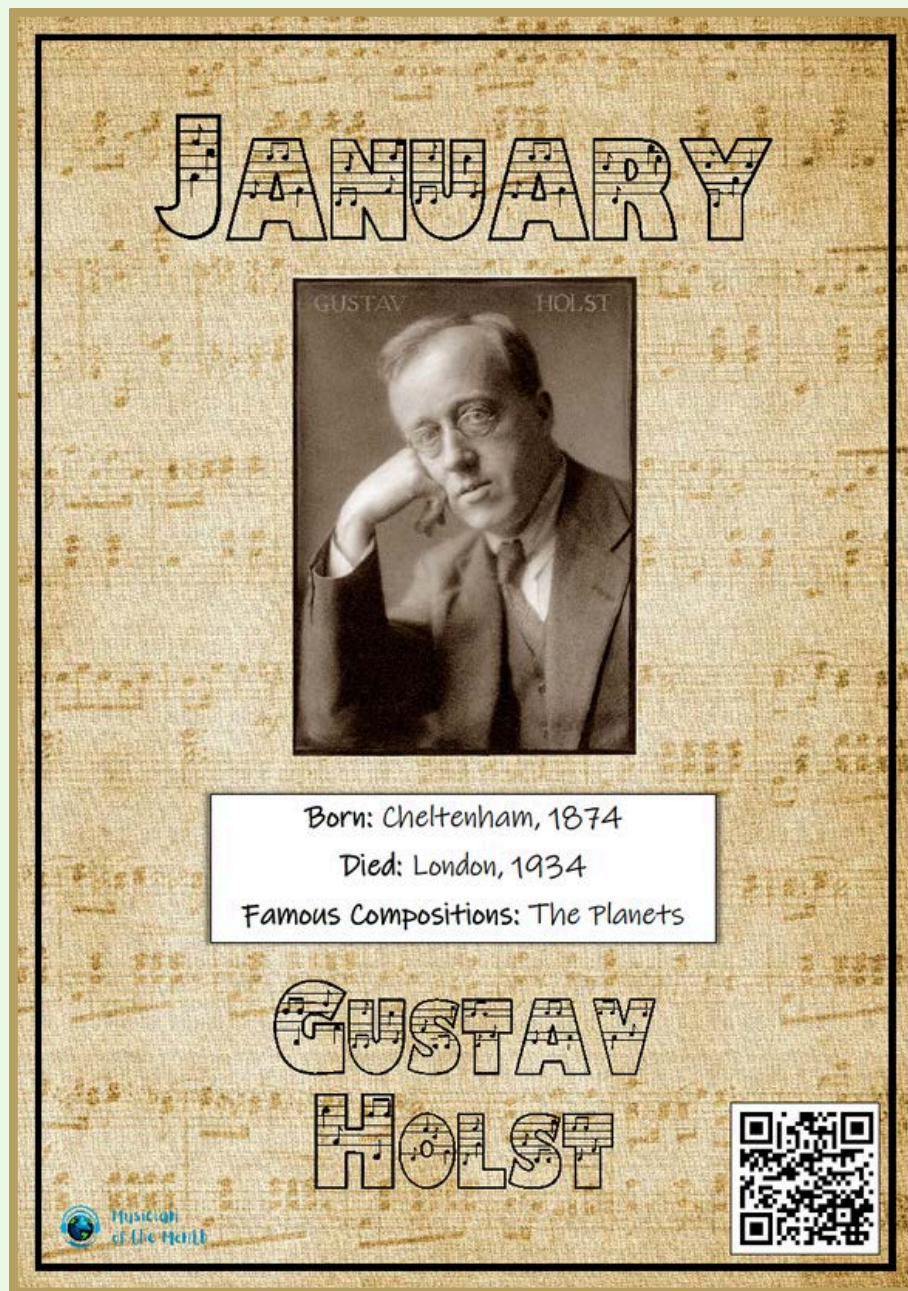
They have just started their new topic on Frozen Kingdoms for geography and looking at the differences between the Polar regions.

In science, they are learning about Charles Darwin and his theory of Evolution – this has generated some interesting questions! And in art, they had a messy but fun afternoon using pastels and chalks to create their own images of the Northern Lights as they have been studying natural art.

Just a reminder that our trip to Exmoor Zoo is on Wednesday 21st January – please ensure the children bring waterproof coats, water bottles and a packed lunch.

Thank you as always for your continued support.





**JANUARY**

GUSTAV HOLST

Born: Cheltenham, 1874  
Died: London, 1934  
Famous Compositions: The Planets

**GUSTAV  
HOLST**



Musician of the Month

Please contact the teacher directly if your child is interested in having music lessons. They can have taster lessons if they would like to give it a go before committing...

Violin and keyboard lessons with Louise Craddock - [l.craddockmusic@btinternet.com](mailto:l.craddockmusic@btinternet.com)

Guitar and brass lessons with Nick Davie - [nick-davie1@hotmail.co.uk](mailto:nick-davie1@hotmail.co.uk)

Drum lessons with Tom – [devondrumschool@gmail.com](mailto:devondrumschool@gmail.com)

Singing and piano lessons with Verity - [V.stroudmusician1@outlook.com](mailto:V.stroudmusician1@outlook.com)

Please email Mrs Jackson at [rjackson@chulmleigh.devon.sch.uk](mailto:rjackson@chulmleigh.devon.sch.uk) if you have any questions about music in school.

Our school choir is also on Fridays.



## PTA News & Events

Happy New Year to you all! What a Christmas Season the PTA have had, we enjoyed a rest and a glass of wine or two once our final event was done. It was all worth it with some amazing fundraising totals. We have met already this term and have lots of exciting plans in store.

Please follow us on social media or keep an eye on our newsletter or posters around the school for more information. As always, keep your ideas and requests coming in to [PTA@chumleigh-primary.devon.sch.uk](mailto:PTA@chumleigh-primary.devon.sch.uk)



ALL  
*Christmas*  
Events Grand Total...

CHRISTMAS CARD PROJECT  
CHRISTMAS FAYRE  
TOY SALES  
WREATH MAKING  
HAMPER RAFFLE

**£2,814.65**

We are absolutely blown away by this amount. Thank you so much to everyone who made this possible.



**BUS TICKET**

This bus ticket is gifted to you from your PTA

FROM: CHULMLEIGH PRIMARY SCHOOL  
TO: A DAY OF FUN AND BACK AGAIN!

Value: £150.00

TERMS & CONDITIONS: YOU MUST HAVE FUN!



### Your Elected Committee

**Chair:** Donna Palmer · **Treasurer:** Natalie Bedford · **Secretary:** Laura Cockram

**Parent Committee Members:** Molly Pincombe, Angela Elston, Trudy Loveday, Rebecca Harrison, Sam Young, Hanna Webber

**Teacher Committee Members:** Rebecca Jackson, Alison Hancock

The PTA brings you...

# BREAK THE RULES DAY!

(Just for One Day!)

Friday 30th January

Chulmleigh Primary School

50p Pay 50p per rule to be broken

## What's happening?

Each class will have their **OWN** special rules to break!

Listen to your teacher to find out your class's rules!

### Important to Remember:

- ✓ Be kind and respectful
- ✓ Follow all safety rules
- ✓ Only break the rules your teacher says are allowed!

# Let's have fun!

Get ready to be creative and silly!

★ Break the rules (the right way!) ☺



Chulmleigh Primary School PTA

Chulmleigh Primary School PTA

Brought to you by the PTA

## CHULMLEIGH ACADEMY TRUST School Terms and Holiday Dates - 2025/2026 Academic Year

	September					October					November					December					January					February				
College Week	1	2	1	2	1	1	2	1	2	1	1	2	1	2	1	1	2	1				2	1	2	1		2	1		2
Monday	1	8	15	22	29		6	13	20	27	3	10	17	24		1	8	15	22	29		5	12	19	26		2	9	16	23
Tuesday	2	9	16	23	30		7	14	21	28	4	11	18	25		2	9	16	23	30		6	13	20	27		3	10	17	24
Wednesday	3	10	17	24		1	8	15	22	29	5	12	19	26		3	10	17	24	31		7	14	21	28		4	11	18	25
Thursday	4	11	18	25		2	9	16	23	30	6	13	20	27		4	11	18	25		1	8	15	22	29		5	12	19	26
Friday	5	12	19	26		3	10	17	24	31	7	14	21	28		5	12	19	26		2	9	16	23	30		6	13	20	27

	March					April					May					June					July					August					
College Week	1	2	1	2	1	1			2	1	1	2	1	2	1	1	2	1	2	1	1	2	1	2	1						
Monday	2	9	16	23	30		6	13	20	27		4	11	18	25	1	8	15	22	29		6	13	20	27		3	10	17	24	
Tuesday	3	10	17	24	31		7	14	21	28		5	12	19	26	2	9	16	23	30		7	14	21	28		4	11	18	25	
Wednesday	4	11	18	25		1	8	15	22	29		6	13	20	27	3	10	17	24			1	8	15	22	29		5	12	19	26
Thursday	5	12	19	26		2	9	16	23	30		7	14	21	28	4	11	18	25			2	9	16	23	30		6	13	20	27
Friday	6	13	20	27		3	10	17	24		1	8	15	22	29	5	12	19	26			3	10	17	24	31		7	14	21	28

Bank Holidays	<span style="color: red;">■</span>	Non-Pupil Days	<span style="color: green;">■</span>
25 December 2025		Five days selected from within the term dates	
26 December 2025		to be determined by the Board of Directors	
01 January 2026		School Holidays	<span style="color: orange;">■</span>
03 April 2026 (Good Friday)		Occasional Holidays	<span style="color: blue;">■</span>
06 April 2026 (Easter Monday)		Two days selected from within the term dates	
04 May 2026 (May Day)		to be determined by the Board of Directors	
25 May 2026 (Spring Bank Holiday)			
24 August 2026 (Summer Bank Holiday)			

## Chulmleigh Primary School Wrap-around Care



**Time Slots Available Between:** 8 am - 9 am  
3.30 pm - 6 pm

**Charges:** Registration Fee £10 (per family)  
£6.00 per hour for 2 year olds  
£5.50 per hour for 3-4 year olds  
£4.50 per hour for Reception to Year 6  
After 6pm Late Collection Charge - £15

**Tax-free childcare!**  
Please follow this link:  
[Tax-Free Childcare - GOV.UK](https://www.gov.uk/tax-free-childcare)

For further information  
please visit our website:  
[www.chulmleigh-primary.devon.sch.uk](http://www.chulmleigh-primary.devon.sch.uk)

**PUBLIC CONSULTATION**

## School Admissions Policy

16 November 2025 to 16 January 2026



**You are invited to review the proposed 2027-28 admission arrangements for state-funded schools in Devon and those in Bournemouth, Christchurch & Poole, Cornwall, Dorset, Plymouth, Somerset and Torbay supported by the Devon School Admissions Service at [www.devon.gov.uk/admissionarrangements](http://www.devon.gov.uk/admissionarrangements)**

\*The School Admissions Partnership will consult in November to 12 January.



Chulmleigh  
Primary School  
& Nursery

# School Lunches




## School Lunches

### MyEd + Pay £2.61

**Please order by midnight the day before**

\*

**If you miss this deadline please provide  
your child with a packed lunch**

[www.chulmleigh-primary.devon.sch.uk](http://www.chulmleigh-primary.devon.sch.uk)






## SPRING MENU

Week 1

**FRESH FRUIT & YOGHURT SERVED DAILY**



	MONDAY	TUESDAY	WEDNESDAY	THURSDAY	FRIDAY
<b>Pick a MAIN</b>	Breakfast Brunch with Bacon, Sausage, Hash Brown and Beans	Beef Lasagne with Wedges & garden Peas	Roast Gammon with Roast Potatoes, Gravy, Carrots and Cabbage	Chicken Korma with Rice & Naan Bread	Fish Finger Sandwich with Iceberg Lettuce in a Bag with Roasted New Potatoes and Garden Peas
<b>Pick a MEAT-FREE MAIN</b>	Quorn Sausage with Hash Brown, Beans & Tomatoes	Vegetarian Lasagne with Wedges & Garden Peas	Broccoli & Cauliflower Gratin with Roast Potatoes, Carrots and Cabbage	Vegetarian Cauliflower, Chickpea & Sweet Potato Korma with Rice & Naan Bread	Veggie Finger Sandwich with Iceberg Lettuce in a Bag with Roasted New Potatoes and Garden Peas
<b>Pick a JACKET POTATO</b>	Cheese or Tuna Mayo	Cheese or Beans	Beans or Tuna	Cheese or Tuna Mayo	Cheese or Beans
<b>Pick a SANDWICH</b>	Cheese or Ham	Ham or Tuna Mayo	Cheese or Tuna Mayo	Ham or Cheese	Ham or Tuna Mayo
<b>Pick a DESSERT</b>	Fruit Platter Yogurt Fresh Fruit	Carrot and Courgette Chocolate Brownie Yogurt Fresh Fruit	Flapjack Yogurt Fresh Fruit	Banana Cake Yogurt Fresh Fruit	Coconut Cookie Yogurt Fresh Fruit

We are pleased to offer a variety of allergen free options on our food menu. Although all food is prepared in a kitchen that handles most allergens and therefore we cannot guarantee that cross contamination will never occur, we do take every possible precaution to prevent this from happening.







# School Lunches

**Chulmleigh Academy Trust**

**FRESH FRUIT & YOGHURT SERVED DAILY**

## SPRING MENU *Week 2*

	MONDAY	TUESDAY	WEDNESDAY	THURSDAY	FRIDAY
<b>Pick a MAIN</b>	Battered Chicken Burger in a Bap with Wedges & Salad	Savoury Mince with Creamy Mash, Carrots and Peas	Roast Pork with Roast Potatoes, Carrots, Cabbage & Gravy	Kung Pao Chicken with Steamed Rice & Sweetcorn	Breaded Fish with Roasted New Potatoes and Beans
<b>Pick a MEAT-FREE MAIN</b>	Plant Based Burger in a Bap with Wedges & Salad	Vegetarian Spanish Bean Stew with Creamy Mash, Carrots & Peas	Vegetarian Homity Pie with Roast Potatoes, Carrots and Cabbage	Vegetarian Sweet & Sour Vegetables with Rice & Sweetcorn	Vegetable Fajita with Roasted New Potatoes And Beans
<b>Pick a JACKET POTATO</b>	Cheese or Tuna Mayo	Cheese or Beans	Beans or Tuna Mayo	Cheese or Tuna Mayo	Cheese or Beans
<b>Pick a SANDWICH</b>	Cheese or Ham	Tuna or Ham	Cheese or Tuna	Cheese or Ham	Tuna or Ham
<b>Pick a DESSERT</b>	Iced Sponge	Sticky Toffee Cake with Toffee Sauce	Banana Mousse	Chocolate Krispie Cake	Lemon Drizzle
	Yogurt	Yogurt	Yogurt	Yogurt	Yogurt
	Fresh Fruit	Fresh Fruit	Fresh Fruit	Fresh Fruit	Fresh Fruit

We are pleased to offer a variety of allergen free options on our food menu. Although all food is prepared in a kitchen that handles most allergens and therefore we cannot guarantee that cross contamination will never occur, we do take every possible precaution to prevent this from happening.

**Chulmleigh Academy Trust**

**FRESH FRUIT & YOGHURT SERVED DAILY**

## SPRING MENU *Week 3*

	MONDAY	TUESDAY	WEDNESDAY	THURSDAY	FRIDAY
<b>Pick a MAIN</b>	Beef Meatballs in a Tomato Sauce with Spaghetti, Sweetcorn & Garlic Bread	Hoisin Chicken Stir Fry Noodles with Sweetcorn & Garden Peas	Roast Turkey with Roast Potatoes, Carrots, Cabbage & Gravy	Chipolata Sausage with Mash, Gravy, Carrots & Peas	Chicken Nuggets with Roasted New Potatoes & Baked Beans
<b>Pick a MEAT-FREE MAIN</b>	Vegetarian Tomato & Mozzarella Pasta with Sweetcorn & Garlic Bread	Vegetarian Singapore Noodles with Sweetcorn & Garden Peas	Vegetarian Leek & Mushroom Bake with Roast Potatoes, Carrots, Cabbage & Gravy	Vegetarian Sausage with Mash, Gravy, Carrots & Peas	Vegetarian 'No Chicken' Nuggets with Roasted New Potatoes & Baked Beans
<b>Pick a JACKET POTATO</b>	Cheese or Tuna Mayo	Cheese or Beans	Beans or Tuna Mayo	Cheese or Tuna mayo	Cheese or Beans
<b>Pick a SANDWICH</b>	Cheese or Ham	Tuna Mayo or Ham	Cheese or Tuna Mayo	Cheese or Ham	Tuna Mayo or Ham
<b>Pick a DESSERT</b>	Apple & Cinnamon Cake	Jam & Coconut Sponge	Fruit Jelly & Mandarins	Custard Cookie	Carrot Cake
	Yogurt	Yogurt	Yogurt	Yogurt	Yogurt
	Fresh Fruit	Fresh Fruit	Fresh Fruit	Fresh Fruit	Fresh Fruit

We are pleased to offer a variety of allergen free options on our food menu. Although all food is prepared in a kitchen that handles most allergens and therefore we cannot guarantee that cross contamination will never occur, we do take every possible precaution to prevent this from happening.



ARGYLE  
COMMUNITY  
TRUST



### Monday - KS1 Football

Monday 12th January 2026 to Monday 9th February 2026

5 weeks due to Inset Day on Monday 5th January

<https://www.abler.io/shop/pact/2313123/product/Q2x1YlNlcnZpY2U6NDk3MTE=?>

### Tuesday - KS1 & KS2 Mutli Skills

Tuesday 6th January 2026 - Tuesday 10th February 2026

6 Week Block

<https://www.abler.io/shop/pact/2313123/product/Q2x1YlNlcnZpY2U6NDk3MTQ=?>

### Wednesday - KS2 Football

Wednesday 7th January 2026 - Wednesday 11th February 2026

6 Week Block

<https://www.abler.io/shop/pact/2313123/product/Q2x1YlNlcnZpY2U6NDk3MTY=?>

### Thursday - Girl's Football

Thursday 8th January 2026 - Thursday 12th February 2025

6 week block

<https://www.abler.io/shop/pact/2313123/product/Q2x1YlNlcnZpY2U6NDk3MTc=?>

# Additional Information



DEVON CRICKET FOUNDATION

REGISTER HERE

FREE  
**'COME AND TRY SESSIONS'**

ALL STARS

**CHULMLEIGH SPORTS CENTRE**  
**THURSDAY, 19 FEBRUARY 2026**

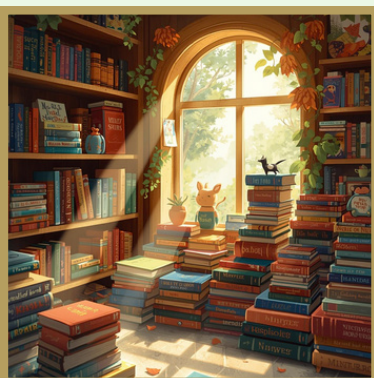
<b>SCHOOL YEARS 1, 2 &amp; 3</b>	<b>10:00 - 11:30</b>
<b>SCHOOL YEARS 4, 5 &amp; 6</b>	<b>11:30 - 13:00</b>

For more information, please contact Andrea Summers  
andreadavies25@hotmail.com <https://bit.ly/3Y3FBxF>

## Are you a Michael Morpurgo fan?

If so there is an event in Exeter - please see the link below for further details!!.....

[cathedral.org.uk/whats-on/events/my-heart-was-a-tree-with-michael-morpurgo/](https://cathedral.org.uk/whats-on/events/my-heart-was-a-tree-with-michael-morpurgo/)




CHULMLEIGH YOUTH FOOTBALL CLUB

**Coffee Morning!**

To Raise Funds for  
Chulmleigh Youth  
Football Club

**All Welcome!**

Raffle  
Sweet stall  
Cakes  
Hot and Cold Drinks

"Savor the Warmth,  
Share with a Friend"

**Come & Join us**  
Chulmleigh Town Hall  
Sat 31st January  
9am-11am

# Admissions Information

## Admissions policy for 2027-28: Annual Consultation

Along with all other schools and academies in Devon, we are consulting on an admission policy for 2027-28. The Local Authority is also consulting on its arrangements – the admissions schemes through which you can apply. You are invited to look at the proposal new policies which are based on policies for this year and next year and to have your say on them.

Our proposed policy is on our admission page [Chulmleigh Primary School - Admissions - Join Us!](#) and you can see all policies at <http://devon.cc/schoolpolicy>

Further information is here: <http://www.devon.gov.uk/admissionarrangements>

The consultation runs between 1 November and 16 January 2026.

Policies will be determined by the end of February and published in the same places by 15 March 2026 next year.

You can comment at [schoolsadmissionpolicy-mailbox@devon.gov.uk](mailto:schoolsadmissionpolicy-mailbox@devon.gov.uk) or by emailing the school.

## Apply for a primary school place

Was your child born between 1 September 2021 and 31 August 2022?



Apply online at:  
[devon.cc/admissionsonline](https://devon.cc/admissionsonline)  
or scan the QR code. Applications open from 15 November 2025 to the 15 January 2026

If you can't access the school admissions website you can get more information by emailing [admissions@devon.gov.uk](mailto:admissions@devon.gov.uk) or call our Education Helpline on: **0345 155 1019**



You must apply through the Admissions Team, even if you've already given details to a school. Applications made directly to schools or on their lists will not be accepted.



# A big well done!!

Back in June Ronnie saved up his money and purchased 8 turkey chicks, from then Ronnie took on full responsibility in raising his turkeys ready for people to buy for their Christmas lunch.

Then on 20th December Ronnie helped dispatch and pluck them and finished with dressing them ready for people to collect.

Ronnie research the price to sell scantily at and wrote out an invoice for each of his customers.

His largest turkey that he sold weighed 28lbs! We all also enjoyed one on Christmas Day.

Ronnie has since paid the majority of his earnings into his bank but kept back £100 for another batch of chicks in the summer.

Well done Ronnie!

